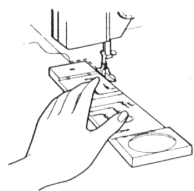


## Machine Sewing

### Stitch Along Topstitching Guides™

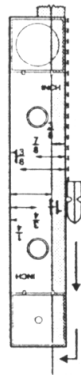
The challenge when topstitching is to stitch straight and evenly from a seam or edge. These new Stitching Guides make it easy to topstitch around pockets, casings, garment edges and zippers.



There are 2 see-thru guides with widths in  $\frac{1}{8}$ " to  $\frac{1}{2}$ ". When topstitching, select desired width. Insert row of teeth on the bottom of guide into a seam or along an edge to provide stability.

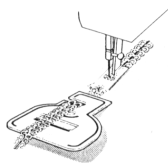
Round finger holes allow for easy control. Use a zipper foot to stitch along the edge of the guide.

The StitchAlong Guide can also be used for topstitching centered and lapped zipper applications. The ends of the guides are raised and designed to fit over zipper tabs.



### Hand Guides

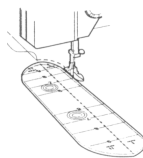
Designed by Cordell Moran, these clear, plastic guides are used to keep decorative trims and elastic from twisting while machine stitching. There are 2 guides with different size openings, ranging from  $\frac{1}{4}$ " to  $\frac{7}{8}$ ".



Guide is held in front of presser foot while stitching to help control the placement of trims.

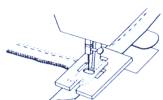
### Stitch-Along Fly Front Zipper Guides™

Use these guides to insure perfectly-shaped topstitching for fly front zippers on men's and women's pants. There are 2 plastic see-thru guides for widths from  $\frac{3}{4}$ " to  $1\frac{1}{2}$ " and 6" to 9" lengths. Round finger holes allow for easy control. Use a zipper foot to stitch along the edge of the guide.



### Seam Buster

This handy tool eliminates uneven and skipped stitches when hemming jeans and machine stitching over thick seams in jackets, towels, quilts, upholstery and home dec projects.



Using the Seam Buster is an easy on-step process, and it can be used with any sewing machine.

## Hand Sewing

### Easy-Hold Clamp

Works like a third hand! Clamp holds buttons, snaps, hooks & eyes in place while hand sewing! Can be adjusted to fit size of fastener. Clamp will hold fasteners up to  $1\frac{1}{2}$ ' from edge of fabric.



### Looped Needle Threader

Have you ever had your thread slip out of a needle threader? This one prevents slippage! There is a small loop on the end of the needle threader that holds the thread securely as it passes through the eye of the needle. Use it for threading hand, machine and serger needles.

The wire is very fine so it can also be used for stringing beads! Threader can be stored on a magnet!

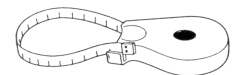


### Wrap-Around Thread Puller

Great for pulling threads evenly! Use to gather threads for sleeves, ruffles, smocking and home dec projects. Thread sticks to puller to prevent slipping and breaking. Simply turn as you pull!

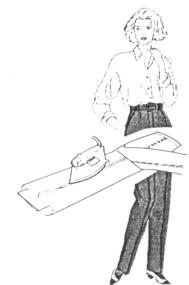
### Wrap'N Stay Retractable Tape Measure

Perfect for measuring around your hips and other curved areas. Tape can be secured in slot on side of case. Push retracting button to tighten tape.



### Pants Pressing Board

Ideal for pants construction! This padded pressing board slips into a pants leg so seam allowance can be pressed open without making creases, and it prevents impressions from opposite side seam.



Come visit the Dritz Web Site [www.dritz.com](http://www.dritz.com) for more ideas!

## Dritz

Creative Ideas For Today's Consumer  
P.O.Box 5028, Spartanburg, SC 29304 ©2001 Prym-Driz Corp.