

CLOTHING & TEXTILES PROGRAM
201 Scovell Hall
Lexington, KY 40546-0064
Phone (859) 257-7775
Fax (859) 257-4352



*"extending clothing
knowledge and skills"*

KENTUCKY

MASTER

VOLUNTEER

IN

CLOTHING

CONSTRUCTION

PROGRAM

**March
2005**

VOL. 14, NO. 1



Bobbin along with Marjorie

March came in like a lion! I hope that spring is just around the corner, though. If any of you have been to the fabric stores, I'm sure you are as excited about the bright colors and new fabrics as I am!

In January, I spent a of couple days near Reno, Nevada attending the National Finals for the Make it Yourself with Wool contest. Wow, talk about inspiring! I was amazed at the quality and creativity of the young people from across the country. For those of you who don't know, there is an adult division in this contest, and one state winner gets to participate in the national event. This year's adult winner was a lady from Ohio. Kentucky will be selecting its representative in the fall. I would like to encourage everyone to consider sewing for this. For entering the state contest, everyone receives a piece of Pendleton wool, not available in any retail store. Each of your county Extension agents should have information on this.

Congratulations to **Sara Counts**, CMV from the Purchase Area. Sara has been selected to fill the vacant CMV position on the MVP Steering Committee. Also, **Mary Aberbeck** will be filling the 4-H agent spot. Welcome, ladies I look forward to working with you to plan our upcoming trainings. Thanks go to **Gina Noe**, 4-H agent, and **Jo Ann Ellegood**, CMV, for serving on the committee for the past three years.

I've had the opportunity to go through many of the county newsletters and am excited to see all the activity with quilt clubs and 4-H sewing projects. Once again the Purchase area CMVs are presenting their serger workshops. I know that everyone that attends will be delighted. Let me remind you to spread the word that you are a Certified/Master Volunteer in Clothing Construction. I want the entire state to know how vital and important this program is. There are 92 active volunteers across the state of Kentucky!

Marjorie M. Baker



WEB SITE of INTEREST

I would like to call everyone's attention to a Web site that I have found. Some of you may already know about it. You can sign up for a number of newsletters to receive via e-mail, one of which is called 501 Sewing Secrets. Check it out at <http://newsletters.drgnetwork.com/>

ATTENTION: CLASS OF 2004

You should be getting close to completing your samples if you haven't already. I am pleased to say that **Gretta Nichols** and **Patti Bridge** have had their samples checked and are working on their garments. I will be checking samples in Somerset and Louisville later this month. When you have finished your sewing samples, contact your county contact agent to arrange a time and place for checking.

2005 4-H Fashion Revue

Ann Beard and **Edna Gunsales**, CMVs from Taylor County, are serving on the State 4-H Fashion Revue Committee. They are chairing the service project, which will include making heart shaped pillows for cancer patients. Other MVPs may be called upon to help with preparing the pillows of the 4-H'ers to complete. Thanks in advance for helping. Mark your calendars for Wednesday, June 15, 7 p.m. at Memorial Hall for this event. The state Fashion Revue takes place during *4-H Teen Conference* here on the University of Kentucky campus.

4-H Needlework Projects

A big thank you goes to **Coetta Combs**, **Nita Bensen**, and **Karen Mikel**, CMVs, for their contributions to the 4-H Needlework curriculum. In-service training was held in December, and the program was well received. A follow-up training is scheduled for May 24 and 25 at The Leadership Center in Jabez, Ky. This training will include hands-on classes to learn needlework skills, teaching children, and judging project work. Anyone interested in participating, please contact your county 4-H agent for registration details.



Connie Talent
CMV Calloway County, Class of 1998

Connie Talent is in the spotlight this month.

Connie's sewing began as many of yours did on a black head Singer with a cast iron and wood cabinet and a treadle pedal. She doesn't remember what her first sewing was only that she made her first 4-H sewing project at age 9. It was the eternal multi-pocketed apron with drawstring. About that time her mother traded in her treadle machine for a black head electric Singer, which she still has. Connie says it still makes the prettiest straight stitch and buttonhole that she has ever seen. The buttonholes are made with an attachment and metal templates.

Connie progressed through all the years of 4-H sewing. Ultimately her "Mix and Match" project took her to Lexington to the state style revue, where she learned that she really

liked sewing and traveling. She has been doing it every since!

Originally, Connie aspired to be a 4-H agent. While majoring in Home Economics Education at Murray State University, she met and made friends with Sara Counts. Yes, the same Sara that you all know as a Master Clothing Volunteer. Connie's first day of student teaching is forever etched in her memory, the sight of a student running a needle through her finger!

After college Connie taught Home Economics to female mental patients at Western State Hospital. After a year, she switched to vocational counseling for the disabled and continued that for the rest of her work life. Along the way she got a master's degree in Guidance and Counseling at MSU. During that time she continued to sew for herself and somewhere along the way she started exhibiting her sewing in county, district and state fairs. One year Connie was honored as Reserve Champion in the Textile department at the Kentucky State Fair.

Prior to having her daughter at age 41, she worked weekends at a local sewing machine and fabric store. One of the highlights of working there was learning to operate many types of machines and especially the new sergers. Now the serger is her favorite sewing tool. Connie says, "I like to sew at speed!"

For the past 25 years, Connie has been a county 4-H Sewing project leader. It really started to be fun when her daughter started sewing at age 9. Her daughter is now 15 and loves the new nonclothing projects.

Retirement in 1998 brought Connie to the Master Volunteer in Clothing Construction Program. Now she sews in order to teach as well as for creative pleasure. "Being a Master Clothing Volunteer has honed and expanded my skills beyond what I ever expected. Because of the Master Clothing Volunteer program, I have confidence in and take pleasure in my sewing skills!"

°DOROTHY DO RIGHT°

UNDERSTANDING PATTERN EASE

Did you know that there is a reference section in the back of every pattern catalog? The reference section includes a complete set of measurement charts, instructions on how to choose the correct size pattern, a fabric width conversion chart, an index of patterns by pattern number, and in some catalogs, an **ease** chart. The **ease** chart lists terms that describe the amount of **ease** that's included in patterns. There are two types of **ease** included in each pattern: **Wearing Ease** (in every pattern), which is the minimum fullness necessary for the body to move comfortably; and **Design Ease** (in most patterns), which is the amount of fullness added to **wearing ease** by the designer to accomplish the intended fashion silhouette.

On the back of each pattern envelope is a short description of the garment. Almost all pattern companies include a one or two word term that describes how much **ease** is included in the garment pattern. The **ease** chart describes what each term means; but if your catalog doesn't contain one, here are some general guidelines to help you understand the five most commonly used terms to describe pattern **ease**. These terms reflect standards that the pattern industry uses.

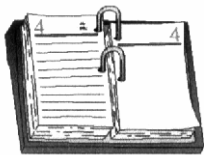
1. **Close-Fitting:** There is 0 to 2 7/8" of ease in dresses, blouses, shirts, tops, vests; not applicable for jackets and coats; 0 to 1 7/8" of ease in skirts (hip area).
2. **Fitted:** There is 3" to 4" of ease in dresses, blouses, shirts, tops, vests; 3 3/4" to 4 1/4" ease in jackets, lined or unlined; 5 1/4" to 6 3/4" ease in coats, lined or unlined; 2" to 3" ease in skirts (hip area).
3. **Semi-Fitted:** There is 4 1/8" to 5" of ease in dresses, blouses, shirts, tops, vests; 4 3/8" to 5 3/4" ease in jackets, lined or unlined; 6 7/8" to 8" ease in coats; 3 1/8" to 4" in skirts (hip area).

4. **Loose-Fitting:** There is 5 1/8" to 8" of ease in dresses, blouses, shirts, tops, vests; 5 7/8" to 10" ease in jackets, lined or unlined; 8 1/8" to 12" ease in coats, lined or unlined; 4 1/8" to 6" ease in skirts (hip area).
5. **Very Loose-Fitting:** There is over 8" of ease in dresses, blouses, shirts, tops, and vests; over 10" ease in jackets, lined or unlined; over 12" ease in coats, lined or unlined; and over 6" ease in skirts (the hip area).

The pattern envelope and the pattern catalog descriptions of the garment describe the amount of **ease** in that garment by using the terminology mentioned above. These **ease** terms describe the fit in the bustline for blouses, shirts, tops, vests, jackets, and coats; for culottes, pants, and skirts, these **ease** terms describe the fit in the hips. Keep in mind that these **ease** allowances are not applicable to stretchable knit fabrics.

Always pay close attention to the garment description on the back of the pattern envelope and always compare your body measurements with those in the measurement chart on your pattern envelope!

Ease terms were taken from a handout published by Butterick Company, Inc., copyright 1992. Article was submitted by **Sandy Davis**, CMV and MVP Steering Committee member.



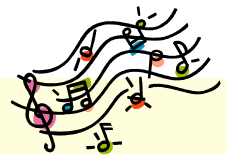
Calendar of Events

March 31, 2005 Steering Committee Meeting, Grayson County Extension Office, 2:00 p.m. CST

April 18-20, 2005 KEHA Annual Meeting, Lexington, KY

May 5, 2005 MVP Agent in-service training

Hem a Few Bars



Which of the following are real songs recorded over the years and played for the enjoyment of all — not just the sewing enthusiast?

- A White Sport Coat and a Pink Carnation
- Blue Suede Shoes
- Blue Velvet (She Wore)
- Buttons and Bows
- Cotton Fields of Home
- Devil With a Blue Dress On
- Handbags and Gladraggs
- How Do You Mend a Broken Heart?
- Lady in Red
- One Size Fits All
- Rag Doll
- Scarlet Ribbons
- Seamless
- Silver Thread and Golden Needles
- Sister Suzie Sewing Shirts for Soldiers
- Wooly Bully
- Venus in Blue Jeans

Answers: Did you guess each one of the above was an honest-to-goodness certified hit on the radio and just perfect for cutting the rug on the dance floor? You're sew clever, and you are sew right!

Copied with permission from:
<http://newsletters.drgnetwork.com/>

May 24-25, 2005 4-H Needlework Retreat

July 27-31, 2005 National ASG Conference, Nashville, TN

Oct. 19-21, 2005 MVP Mid-rotation training

Oct. 29, 2005 Kentucky Competition for Make it Yourself with Wool, Clark County Extension Office.