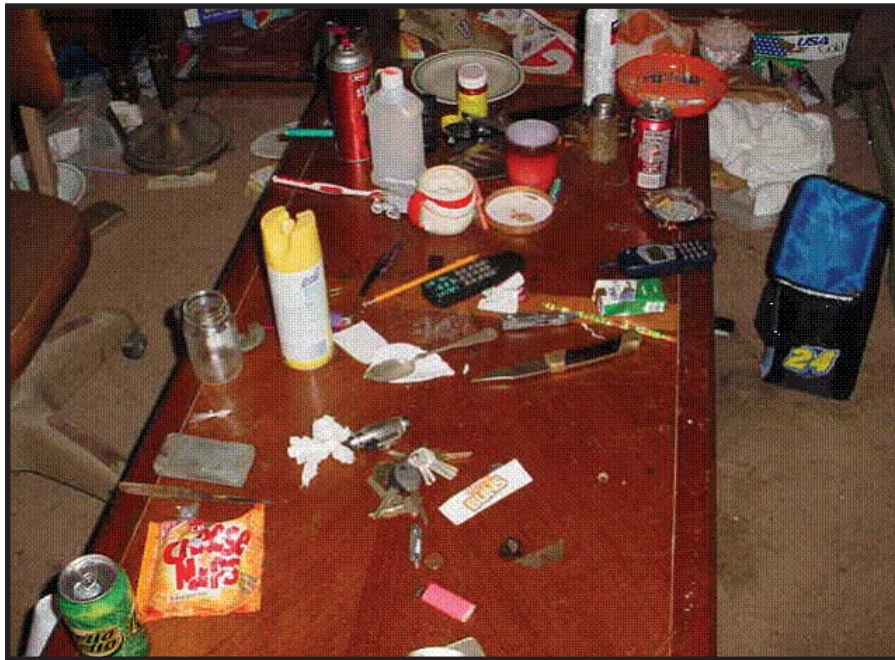


METH: Too Close To Home!

a photo guide for protection of
in-home care providers, rental
property owners, vulnerable adults,
and children.

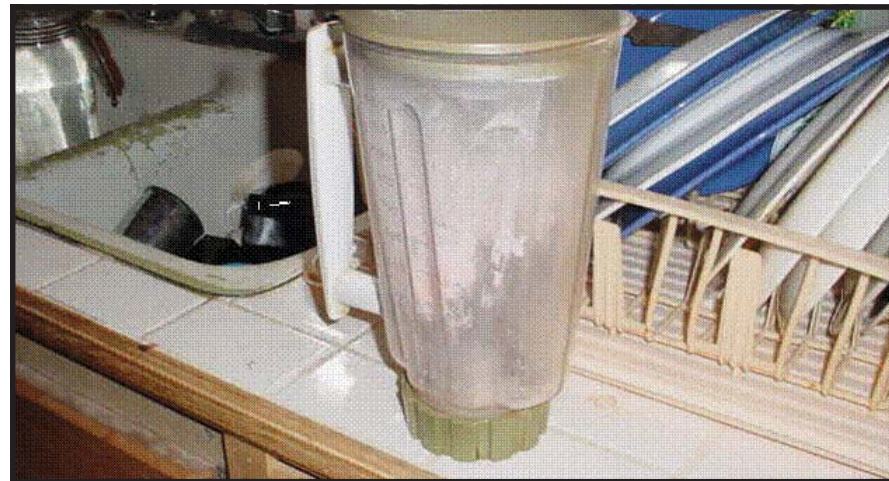
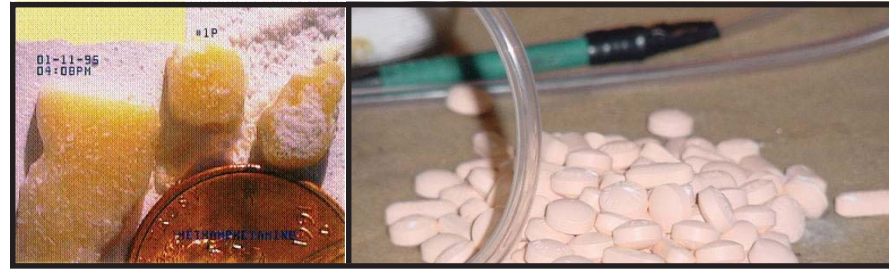


UK
UNIVERSITY OF KENTUCKY
Health Education
through Extension Leadership

www.ca.uky.edu/heel/



Did you know that methamphetamine labs are often found in rental properties and homes? Homes used to produce meth pose a risk to vulnerable adults and children who live with people who make meth. If you visit these homes, your health may also be at risk. The following photos are examples of meth labs found in Kentucky homes.



Suspicious of meth production are nothing to hide. Ignoring these signs may put the health of present and future residents of a meth-production site at risk.

Although clean-up of a dwelling may be expensive, the health risks cost much more.

If you find evidence of a meth lab on your property:

- DO NOT Smell**
- DO NOT Move**
- DO NOT Examine**
- DO NOT Throw Away Solid Waste**
- DO NOT Pour or Flush Liquid Waste**
- DO NOT Use Containers You Suspect Have Been Used for Meth Production**

PROTECT YOUR HOME

CALL

Operation UNITE: 1-866-424-4382

Kentucky State Police: 1-800-222-5555

Pennyrile Narcotics Task Force:

HOTLINE: 1-800-624-4596

Treatment Referrals:

Operation UNITE: 1-866-908-6483

www.operationunite.org

KADD: 1-859-498-9597 / www.kadd.org

Prepared by:

Holly E. Hopper, M.R.C., Extension Associate for Health

Design & layout: Jeffrey Hines, Graphic Artist

Photos courtesy of: Pennyrile Narcotics Task Force
and Kentucky State Police

December, 2004

Educational programs of Kentucky Cooperative Extension serve all people regardless of race, color, age, sex, religion, disability, or national origin.