



University of Kentucky  
College of Agriculture,  
Food and Environment  
Cooperative Extension Service

## 2018 KENTUCKY COUNTY PROFILES



# BUILDING STRONG FAMILIES IN BRACKEN COUNTY



**Shannon  
Smith**  
County Extension Agent,  
Family and Consumer  
Sciences Education

### OUR FOCUS

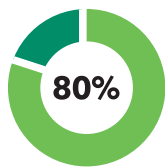
Family and Consumer Sciences (FCS) Extension is committed to improving the health and well-being of individuals and families throughout Kentucky. Our educational programs focus on making healthy lifestyle choices, nurturing families, embracing life as we age, securing financial stability, promoting healthy homes and communities, accessing nutritious food, and empowering community leaders.

### OUR SUCCESS

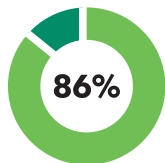
In 2016-2017,  
Cooperative  
Extension  
made  
**22,604**  
contacts with  
individuals and  
families in  
Bracken County.<sup>1</sup>

### A HEALTHIER KENTUCKY

## Making healthy lifestyle choices



of counties in Kentucky implemented programs promoting healthy lifestyle choices.<sup>1</sup>

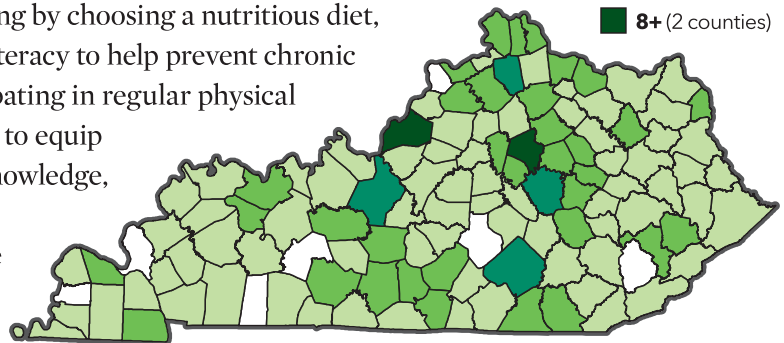


of counties in Kentucky implemented programs promoting healthy homes and communities.<sup>1</sup>

Easy access to unhealthy foods, increased stress, and limited opportunities for physical activity all create challenges and barriers for Kentucky families in making healthy lifestyle choices. Family and Consumer Sciences (FCS) Extension programming through the University of Kentucky teaches families to improve health and well-being by choosing a nutritious diet, increasing health literacy to help prevent chronic diseases, or participating in regular physical activity. Our goal is to equip citizens with the knowledge, resources, and an environment where the healthy choice is the easy choice.

### Number of farmers market locations by Kentucky county<sup>2</sup>

- 0 (7 counties)
- 1-2 (73 counties)
- 3-4 (34 counties)
- 5-7 (4 counties)
- 8+ (2 counties)

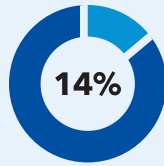




## Food Environment

### OUR COUNTY

- Bracken County had **1** supermarket and other grocery store and **5** convenience stores or gas stations with convenience stores in 2015.<sup>3</sup>
- According to Map the Meal Gap, in 2015, an estimated **1,190** individuals were food insecure in Bracken County.<sup>4</sup>
- Only **7.7% (15.0%-3.8%)** of adults in Bracken County consumed five or more servings of fruits and vegetables per day between 2013-2015.<sup>5</sup>



of the population in Bracken County were estimated to be food insecure in 2015.<sup>4</sup>

### OUR RESULTS

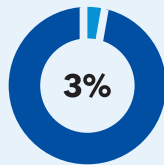
- **332** individuals reported eating more healthy foods.<sup>1</sup>
- **51** people improved their lifestyles by focusing on proper nutrition, reducing disease and injuries, and taking a comprehensive approach to health maintenance.<sup>1</sup>



## Physical Environment

### OUR COUNTY

- According to the CDC's County Diabetes Atlas, **32.4% (37.4%-27.6%)** of adults 18 years and over in Bracken County were obese between 2012 and 2014.<sup>6</sup>
- The Diabetes Atlas also reports that between 2012 and 2014, **28.4% (33.3%-23.8%)** of adults in Bracken County reported no leisure-time exercise in the past month.<sup>6</sup>
- There were **no** fitness and recreation businesses in Bracken County in 2015.<sup>3</sup>



of the population in Bracken County had adequate access to locations for physical activity in 2014.<sup>7</sup>

### OUR RESULTS

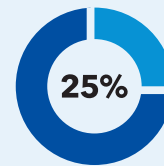
- **18** individuals made changes to their diet and began exercising to improve their health.<sup>1</sup>
- **12** participants made healthy changes so they could age well and live independently.<sup>1</sup>



## Financial Environment

### OUR COUNTY

- The median household income in Bracken County was **\$44,846 (\$49,470-\$40,222)** in 2015.<sup>8</sup>
- In Bracken County, **236** was the average monthly number of infants and children assisted by WIC\* in 2013.<sup>9</sup>
- In 2015, there were **1,447** SNAP/food stamp recipients.<sup>10</sup>
- **9.8% (+/-3.5%)** of people age 65 and over were below poverty between 2011-2015<sup>11</sup> and **23.3% (28.9%-17.7%)** of children ages 5-17 in families were below poverty in 2015.<sup>8</sup>
- Between 2011 and 2015, **4.8% (+/-2.2%)** of full-time/full-year workers were below poverty.<sup>11</sup>



of all children in Bracken County ages 17 and under<sup>12</sup> were below poverty in 2015.<sup>8</sup>

### OUR RESULTS

- **25** individuals became more knowledgeable regarding ways to secure financial stability.<sup>1</sup>
- **20** parents and/or caregivers used community resources when needed.<sup>1</sup>
- Extension is involved in **8** healthy lifestyle coalitions.<sup>1</sup>

#### SOURCES:

<sup>1</sup> Kentucky Cooperative Extension Reporting, FY 2017

<sup>2</sup> Kentucky Proud Farmers Market Directory Report, Generated July 20, 2017 (<http://www.kyagr.com/marketing/farmers-market-directory-printable-format.aspx>)

<sup>3</sup> U.S. Census Bureau, 2015 County Business Patterns. ([factfinder.census.gov](http://factfinder.census.gov))

<sup>4</sup> Map the Meal Gap 2017. ([map.feedingamerica.org](http://map.feedingamerica.org))

<sup>5</sup> Kentucky Health Facts. ([www.kentuckyhealthfacts.org](http://www.kentuckyhealthfacts.org))

<sup>6</sup> CDC County Diabetes Atlas. ([www.cdc.gov/diabetes/atlas/countydata/atlas.html](http://www.cdc.gov/diabetes/atlas/countydata/atlas.html))

<sup>7</sup> Robert Wood Johnson Foundation 2016 County Health Rankings. ([www.countyhealthrankings.org](http://www.countyhealthrankings.org))

<sup>8</sup> 2015 Small Area Income and Poverty Estimates, U.S. Census Bureau ([www.census.gov/programs-surveys/saipe.html](http://www.census.gov/programs-surveys/saipe.html))

<sup>9</sup> Kids Count Data Center. ([datacenter.kidscount.org](http://datacenter.kidscount.org))

<sup>10</sup> Kentucky Cabinet for Health and Family Services. Data Book. December 2015. ([chfs.ky.gov/dcbs/data\\_book.htm](http://chfs.ky.gov/dcbs/data_book.htm))

<sup>11</sup> 2015 American Community Survey 5-Year Estimates, U.S. Census Bureau ([factfinder.census.gov](http://factfinder.census.gov))  
<sup>12</sup> Margin of error: **(+/-20%-30%)**

\* WIC is the Special Supplemental Nutrition Program for Women, Infants, and Children for low-income pregnant, breastfeeding, and non-breastfeeding postpartum women, and to infants and children up to age five who are found to be at nutritional risk."

For more information and to download this and other county profiles, visit [hes.uky.edu/StrongFamilies](http://hes.uky.edu/StrongFamilies)

 College of Agriculture, Food and Environment  
School of Human Environmental Sciences